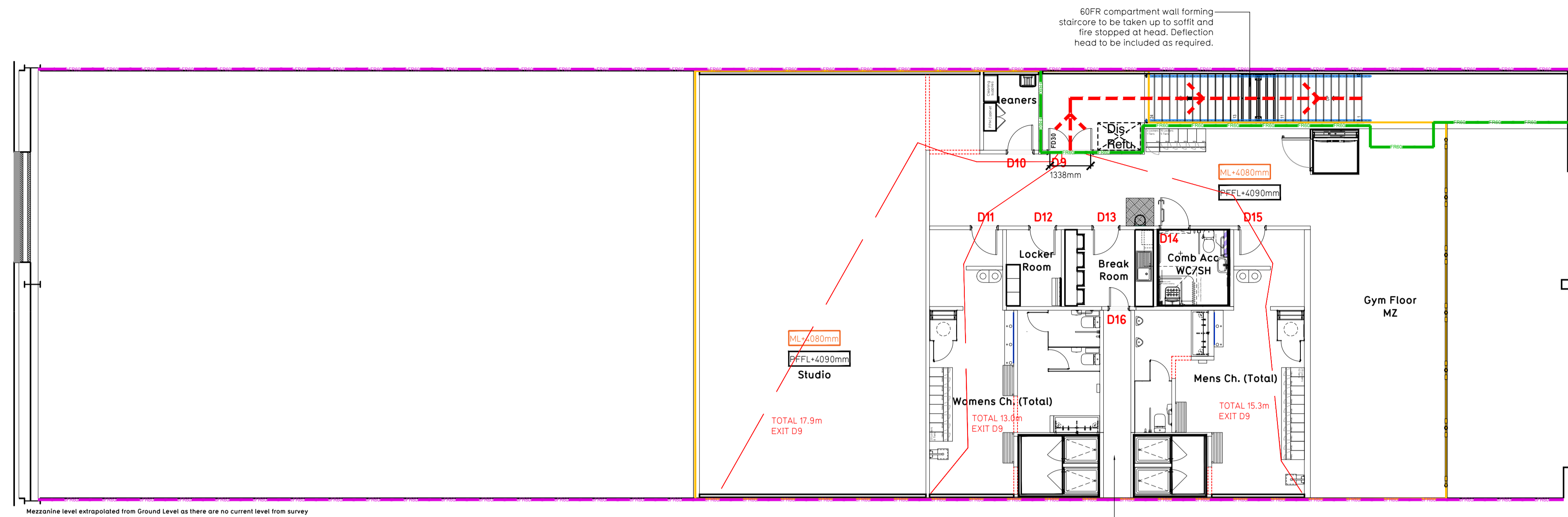
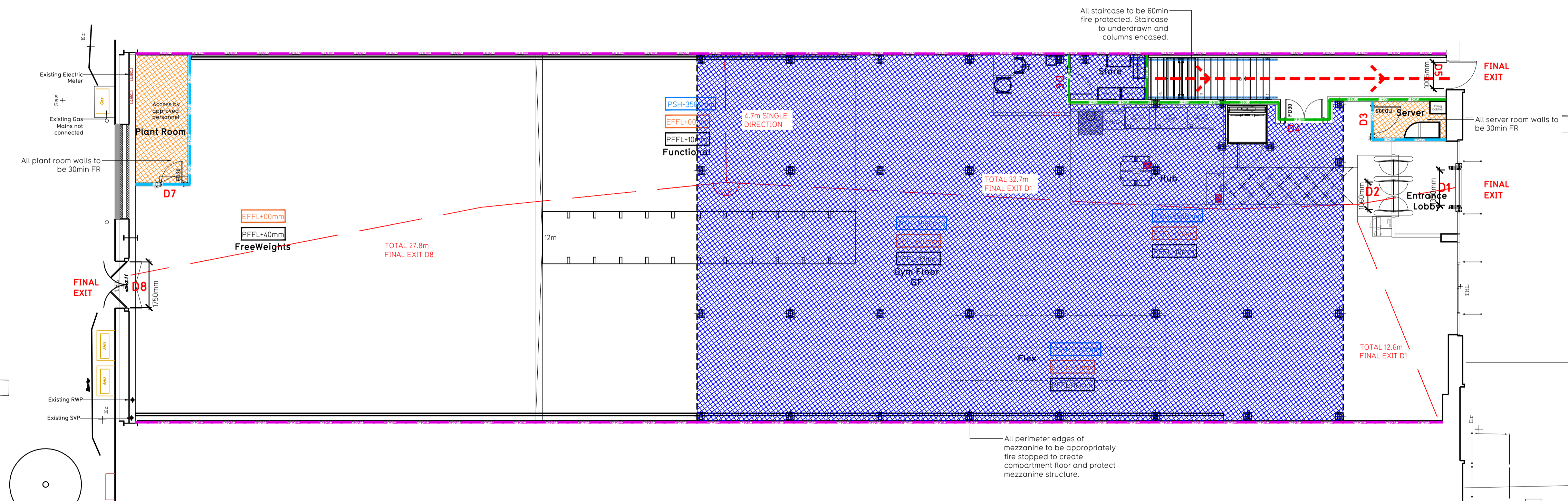


- NOTE:
- Proposals must comply with all acoustic, fire & building regulation requirements
 - No dimensions are to be scaled from this drawing. The contractor is responsible for checking all dimensions on site



All drainage to be underlaid to the underside of mezzanine. All services/drainage penetrations passing through fire rated compartment floor to be fire collared/sealed.

Proposed Mezzanine Floor Plan



Proposed Ground Floor Plan

Fire Evacuation Key

	Existing wall to achieve min 30 minute fire rating (suitability of wall to be confirmed on site by Pure Gym Main Contractor)		Fire Escape Route
	Existing wall to achieve min 60 minute fire rating (suitability of wall to be confirmed on site by Pure Gym Main Contractor)		Minimum Clear Widths
	New wall to achieve min of 30min fire rating		Exit No.
	New wall to achieve min of 60min fire rating		Shared Escape Route
	Protected areas: walls, floors, ceilings and doors to achieve 30minute fire resistant construction.		Fire Door Rating
	Protected areas: walls, floors, ceilings and doors to achieve 60 minute fire resistant construction.		

Escape Route Widths:
In line with Sections 3.21 & 3.22 of 'Approved Document Part B, Volume 2 - buildings other than dwellings' - the adjacent calculations provide justification for the clear opening widths for escape from each floor level/ room in accordance with Table 4 & Appendix C.

Ground Floor
Final Exit D1 limited by Storey Exit D2 Clear Opening Width + 1050mm (allows 222 persons to escape)
Final Exit D8 Clear Opening Width + 1750mm (allows 360 persons to escape, largest opening to be discounted)

Mezzanine Floor
Storey Exit D9 limited by Final Exit D5 Clear Opening Width + 1050mm (allows 110 persons to escape)
Mezzanine Floor occupancy limited to 60 Persons

Based on NIA of 10090sqft, the Puregym max peak occupancy = 186 persons
Calculated using Puregym Fire Safety Occupancy Levels Forecast Tool.
The designed occupancy of the unit as calculated would allow a max. No. of 282 persons, which is larger than the total estimated occupancy target of 186 persons and is therefore thought to meet with the Approved Document Part B.

Fire Alarm
Fire Alarm designed and installed to BS 5839. Smoke & heat detection / emergency lighting by specialist. Please refer to M&E engineer's drawings / specifications.

Escape Lighting
Emergency escape lighting designed and installed in accordance with BS 5266: Part 1. Please refer to M&E Engineer's drawings for final layout and specification.

Fire Stopping
All perimeter edges of mezzanine to be appropriately fire stopped to create compartment floor and protect mezzanine structure. All services/drainage penetrations passing through fire rated compartment floor to be fire collared/sealed.

Mezzanine
Mezzanine Design CDP: New mezzanine structure including deck and column connections to be min 60min FR using boarded solution. Ceiling to be clear and flat ready to receive decoration. Service penetrations to be coordinated and suitably fire stopped. Contractor to submit proposals for design to be reviewed by building control and fire service. Escape Signage and emergency lighting is CDP under the M&E specification. Details of contractors proposals to be provided to Building Control Approved Inspector and Fire Officer within the Contractors Proposals Package, Clause 14.

COO	03.10.23	Construction Issue		SK/WLT
Rev	Date	Description	DRAWING TITLE	Drawn/Checked
PROJECT TITLE		DRAWING No.		
Sittingbourne Retail Park		Fire Evacuation Plan		
Milton Road, Sittingbourne ME10 2XD		Ground & Mezzanine Floors		
SK/WLT	05.12.23	SCALE	2303	003-FEP
DRAWING PURPOSE		Rev		
CONSTRUCTION		COO		

PUREGYM

Pure Gym Ltd
Town Centre House
The Merrion Centre
Leeds
LS2 8LY
e: architecture@puregym.com
t: 0113 285 8787
w: www.puregym.com