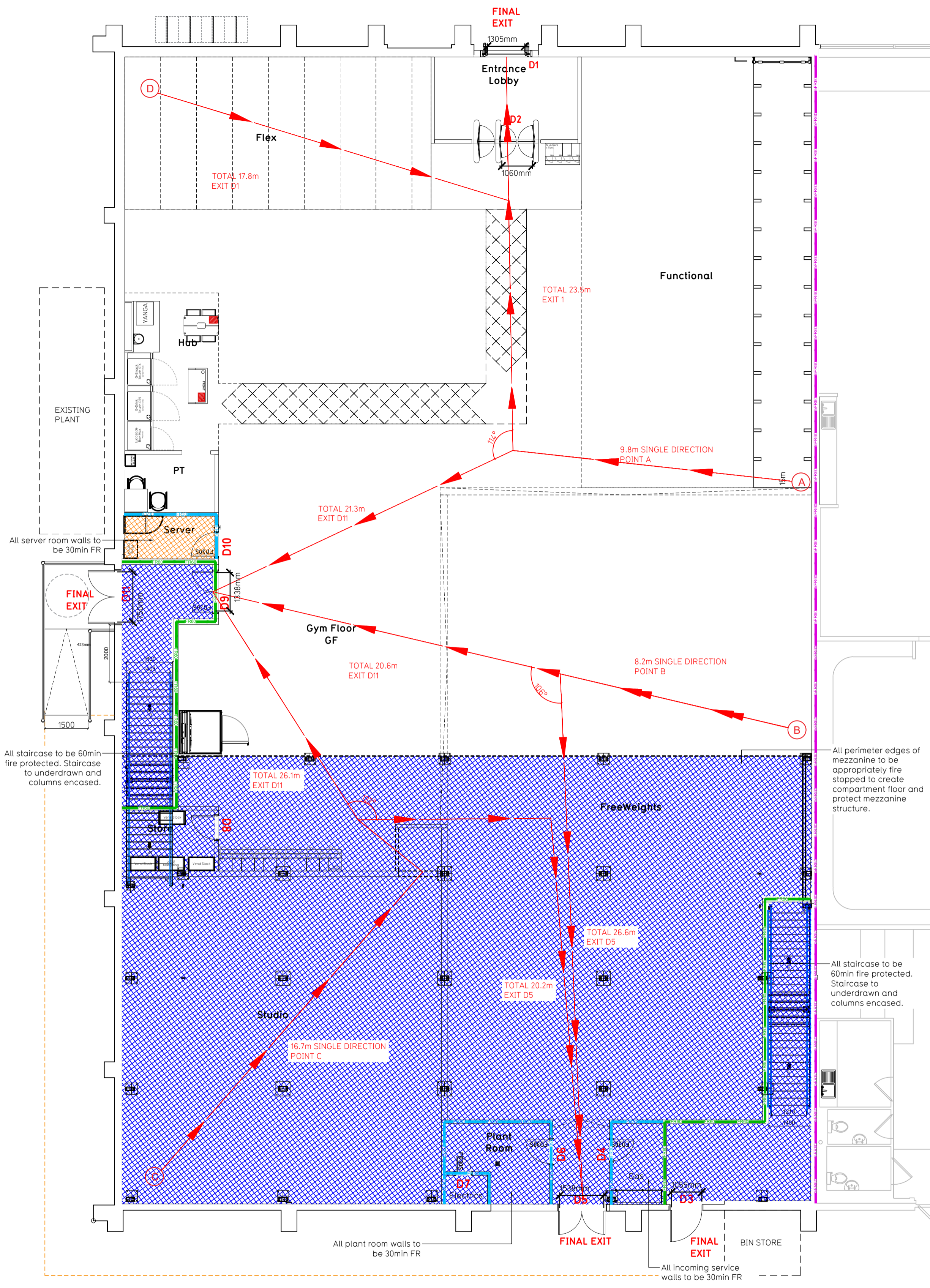
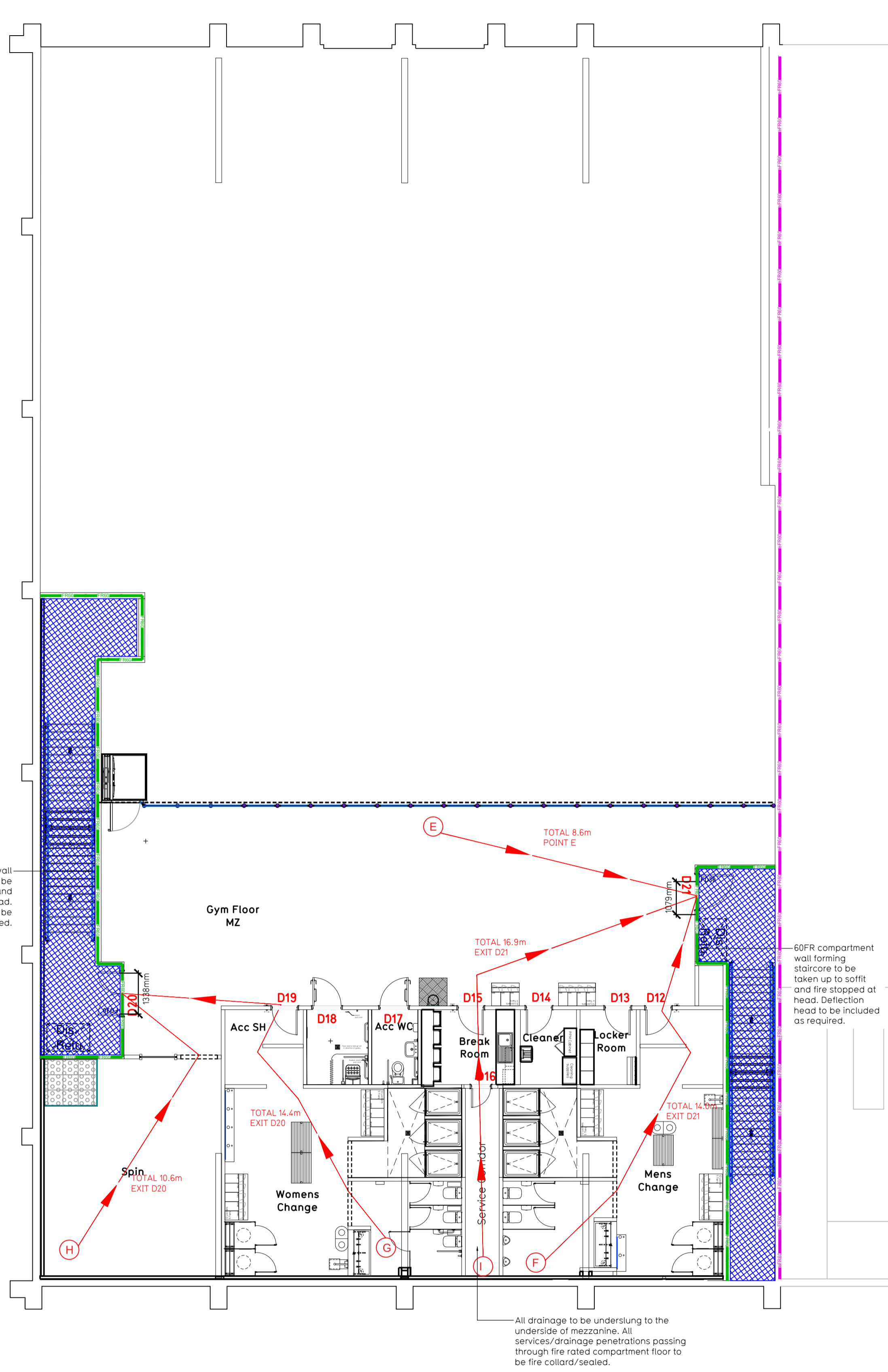


NOTE:

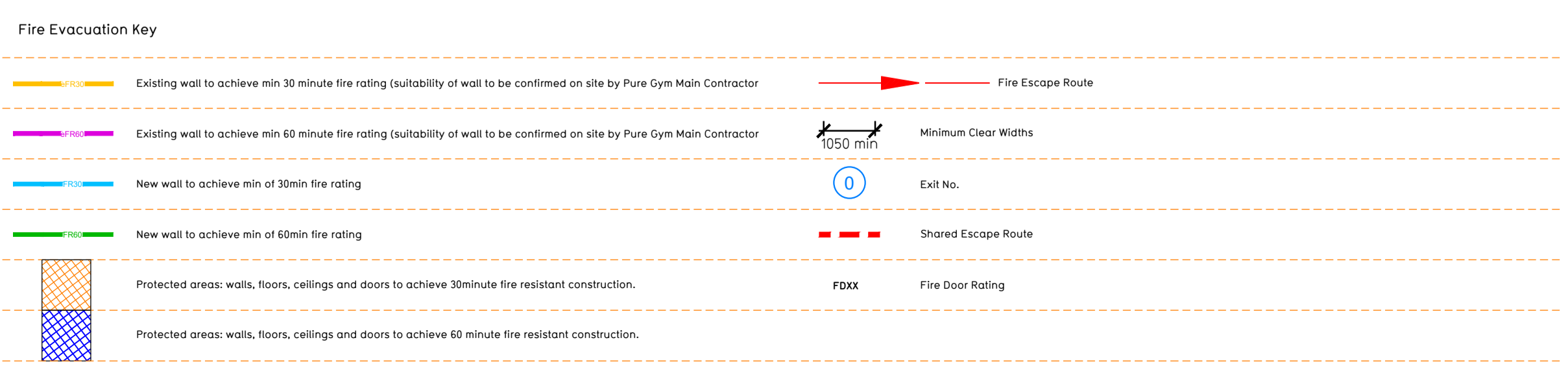
- Proposals must comply with all acoustic, fire & building regulation requirements
- No dimensions are to be scaled from this drawing. The contractor is responsible for checking all dimensions on site



Proposed Ground Floor Plan



Proposed Mezzanine Floor Plan



**Escape Route Widths:**  
 In line with Sections 3.21 & 3.22 of 'Approved Document Part B, Volume 2 - buildings other than dwellings' - the adjacent calculations provide justification for the clear opening widths for escape from each floor level/ room in accordance with Table 4 & Appendix C.

**Ground Floor**  
 Final Exit D1 limited by Storey Exit D2 Clear Opening Width = 1060mm (allows 222 persons to escape)  
 Final Exit D5 Clear Opening Width = 1538mm (allows 317 persons to escape, largest opening to be discounted)  
 Final Exit D11 limited by Storey Exit D9 Clear Opening Width = 1338mm (allows 277 persons to escape)

**Mezzanine Floor**  
 Final Exit D11 limited by Storey Exit D9 Clear Opening Width = 1338mm (allows 277 persons to escape, largest opening to be discounted)  
 Storey Exit D01 limited by Final Exit D9 Clear Opening Width = 1055mm (allows 221 persons to escape)

The Main Stair Core has a merging flow from the Mezzanine and Ground Floors and therefore, W = (N/2.5) + (60S) / 80 must be used. If N is (on door D11) limited to 110 people and S is 1.6m, then W = 1750mm clear door. The distance from the Ground floor storey exit (D9) is more than the minimum 24.

Based on MA of 1334sqm, the Puregym max peak occupancy target = 222 persons. Calculated using Puregym Fire Safety Occupancy Levels Forecast Tool.

The designed occupancy of the unit as calculated would allow a max. No. of 720 persons, which is larger than the total estimated occupancy target of 222 persons and is therefore thought to meet with the Approved Document Part B. To allow free movement between the floors the occupancy has not been split 50/50% but rather allows for occupancy based on gym stations and function assuming that a high percentage of the total occupancy could be on a single floor at one time.

**Fire Alarm**  
 Fire Alarm designed and installed to BS 5839. Smoke & heat detection / emergency lighting by specialist. Please refer to M&E engineer's drawings & specifications.

**Escape Lighting**  
 Emergency escape lighting designed and installed in accordance with BS 5266: Part 1. Please refer to M&E Engineer's drawings for final layout and specification.

**Fire Stopping**  
 All perimeter edges of mezzanine to be appropriately fire stopped to create compartment floor and protect mezzanine structure. All services/drainage penetrations passing through fire rated compartment floor to be fire collared/sealed.

**Mezzanine**  
 Mezzanine Design CDP: New mezzanine structure including deck and column connections to be 60min FR using a boarded solution. Ceiling to be clear and flat ready to receive decoration. Service penetrations to be coordinated and suitably fire stopped. Contractor to submit proposals for design to be reviewed by building control and fire service. Escape Signage and emergency lighting is CDP under the M&E specification. Details of contractors proposals to be provided to Building Control Approved Inspector and Fire Officer within the Contractors Proposals Package, Clause 1.4.

Rev	Date	Description	Drawn/Checked

DRAWING TITLE		DRAWING No.	
South Ruislip Unit 3, Victoria Retail Park, Ruislip, HA4 0AJ		Fire Evacuation Plan Ground & Mezzanine Floor Plans	
DRAWN / CHECKED	DATE	SCALE	JOB No.
HI/HB	07.08.23	1:100 @ A1	2201
DRAWING No.		JOB No.	
003-FEP		003-FEP	
CONSTRUCTION		C00	

**PUREGYM**

Pure Gym Ltd  
 Town Centre House  
 The Merrion Centre  
 Leeds LS2 8LY

© architecture@puregym.com  
 t: 0113 255 8727  
 w: www.puregym.com