

NOTE:

- Proposals must comply with all acoustic, fire & building regulation requirements
- No dimensions are to be scaled from this drawing. The contractor is responsible for checking all dimensions on site

Existing doors do not form part of PureGym Fire Escape Strategy. Doors to be locked shut.

Existing doors do not form part of PureGym Fire Escape Strategy. Doors to be locked shut.

Existing doors do not form part of PureGym Fire Escape Strategy. Door to be locked shut.

Existing doors do not form part of PureGym Fire Escape Strategy. Door to be locked shut.

Existing doors do not form part of PureGym Fire Escape Strategy. Door to be locked shut.

Existing doors do not form part of PureGym Fire Escape Strategy. Door to be locked shut.

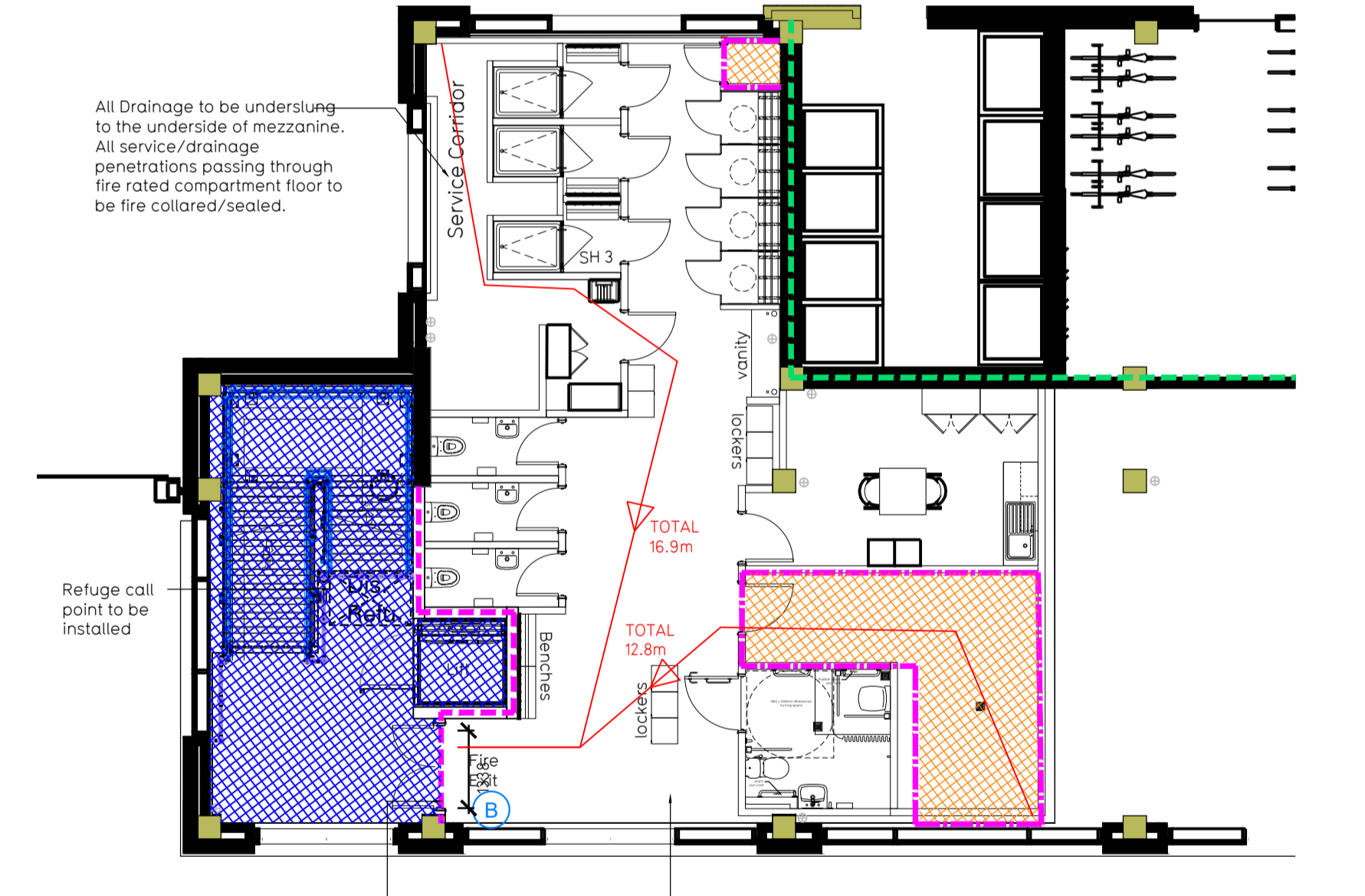
Existing doors do not form part of PureGym Fire Escape Strategy. Door to be locked shut.

Existing doors do not form part of PureGym Fire Escape Strategy. Door to be locked shut.

Existing doors do not form part of PureGym Fire Escape Strategy. Door to be locked shut.

Existing doors do not form part of PureGym Fire Escape Strategy. Door to be locked shut.

Proposed Ground Floor Plan



Proposed Mezzanine Floor Plan

Fire Evacuation Key

- Existing wall to achieve min 30 minute fire rating (suitability of wall to be confirmed on site by Pure Gym Main Contractor)
- Existing wall to achieve min 60 minute fire rating (suitability of wall to be confirmed on site by Pure Gym Main Contractor)
- New wall to achieve min of 30min fire rating
- New wall to achieve min of 60min fire rating
- Protected areas: walls, floors, ceilings and doors to achieve 30minute fire resistant construction.
- Protected areas: walls, floors, ceilings and doors to achieve 60 minute fire resistant construction.

Fire Escape Route
 Minimum Clear Widths
 Exit No.
 Shared Escape Route

Escape Route Widths:
 In line with Sections 3.21 & 3.22 of 'Approved Document Part B, Volume 2 - buildings other than dwellings' - the adjacent calculations provide justification for the clear opening widths for escape from each floor level/ room in accordance with Table 4 & Appendix C.

Ground Floor:
 Final Exit 1 Clear Opening Width = 1050mm (allows 222 persons to escape)
 Final Exit 2 Fed by Storey Exit A Clear Opening Width = 2275mm (escape occupancy limited by Storey Exit A Clear Opening width = 1338mm, allows 271 persons to escape)
 Final Exit 3 Clear Opening Width = 2035mm (allows 417 persons to escape)
 Final Exit 4 Clear Opening Width = 2145mm (allows 439 persons to escape - this is the largest opening; to be discounted)
 Total Aggregate Width for Floor (Less Largest Opening Width of 2145mm from FINAL EXIT 4) = 4434mm

Mezzanine Floor:
 Final Exit 2 Fed by Storey Exit B Clear Opening Width = 2233mm (escape occupancy limited by Storey Exit A Clear Opening width = 1338mm, allows 271 persons to escape). Note however the mezzanine floor occupancy is capped at 60 persons due to single escape staircase.
 Total Aggregate Width for Floor = 1338mm

Total:
 Ground Floor = 916 persons to escape
 Mezzanine Floor = 60 persons to escape
Total = 976 persons to escape

Based on NIA of 8284sqft, the Puregym peak occupancy target = 933 Persons
 Calculated using Puregym Fire Safety Occupancy Levels Forecast Tool.

The designed occupancy of the unit as calculated would allow a max. No. of 976 persons to escape, which is larger than the total estimated occupancy capacity of 153 persons and is therefore thought to meet with the Approved Document Part B.

Fire Alarm
 Fire Alarm designed and installed to BS 5839. Smoke & heat detection / emergency lighting by specialist. Please refer to M&E Engineer's drawings / specifications.

Escape Lighting
 Emergency escape lighting designed and installed in accordance with BS 5266-Part 1. Please refer to M&E Engineer's drawings for final layout and specification.

Escape Signage and emergency lighting is CDP under the M&E specification. Details of contractors proposals to be provided to Building Control Approved Inspector and Fire Officer within the Contractors Proposals Package, Clause 14.

Rev	Date	Description	Drawn/Checked
C01	19.09.23	Issued for construction	WLT
C00	19.07.23	Update for Tender Variation	WLT

PROJECT TITLE	DRAWING TITLE
Seven Sisters Apex Gardens, Seven Sisters Rd, London, N15 5JT	Fire Evacuation Plan Ground & Mezzanine Floor
HI/NA	29.03.23
DRAWING PURPOSE	CONSTRUCTION
SCALE	1:100 @ A1
NO. OF SHEETS	2105
DRAWING No.	002-FEP
Rev	C01

PUREGYM

Pure Gym Ltd
 Town Centre House
 The Merrion Centre
 Leeds
 LS2 8LY
 e: architecture@puregym.com
 t: 0113 285 8787
 w: www.puregym.com