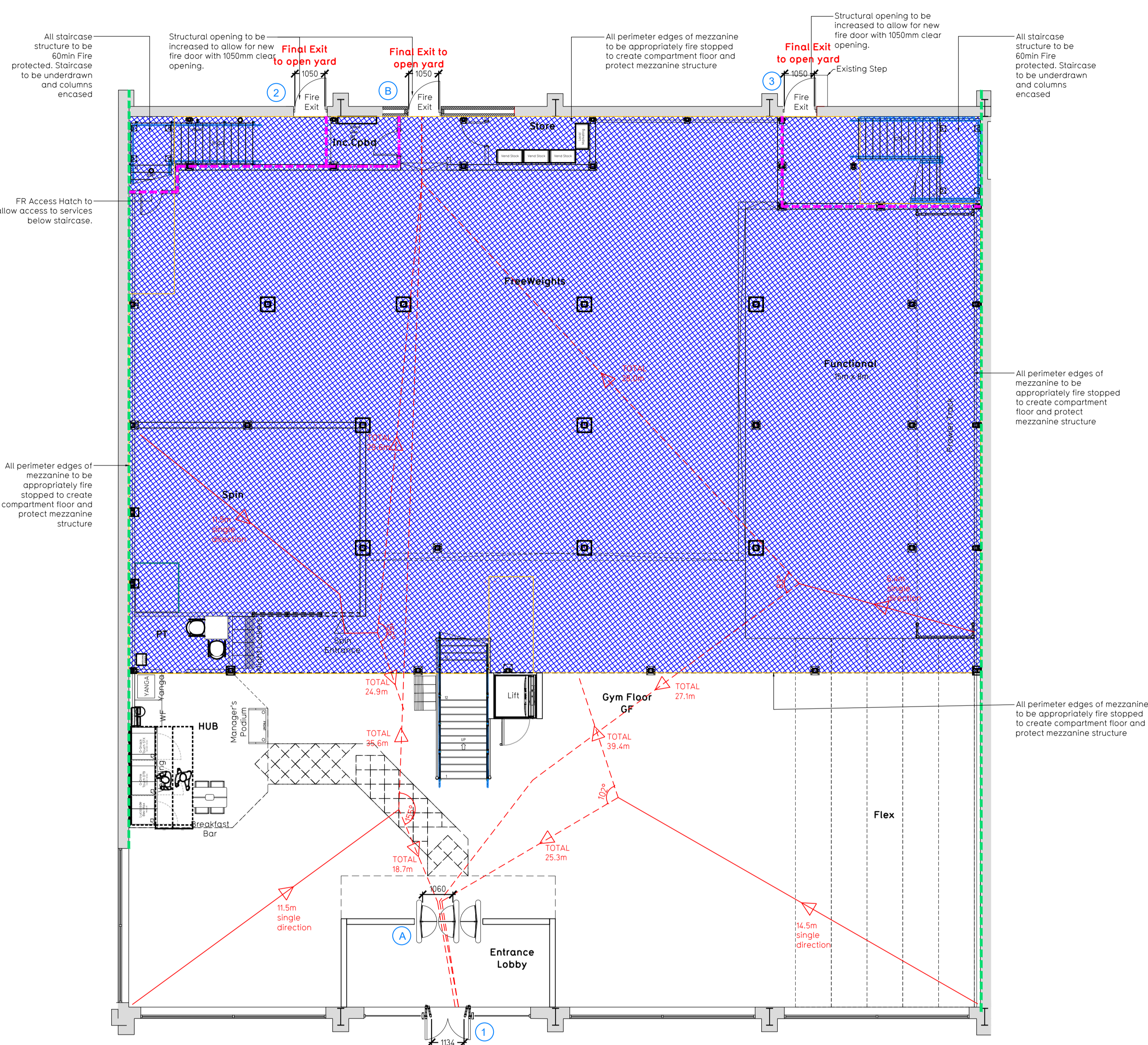
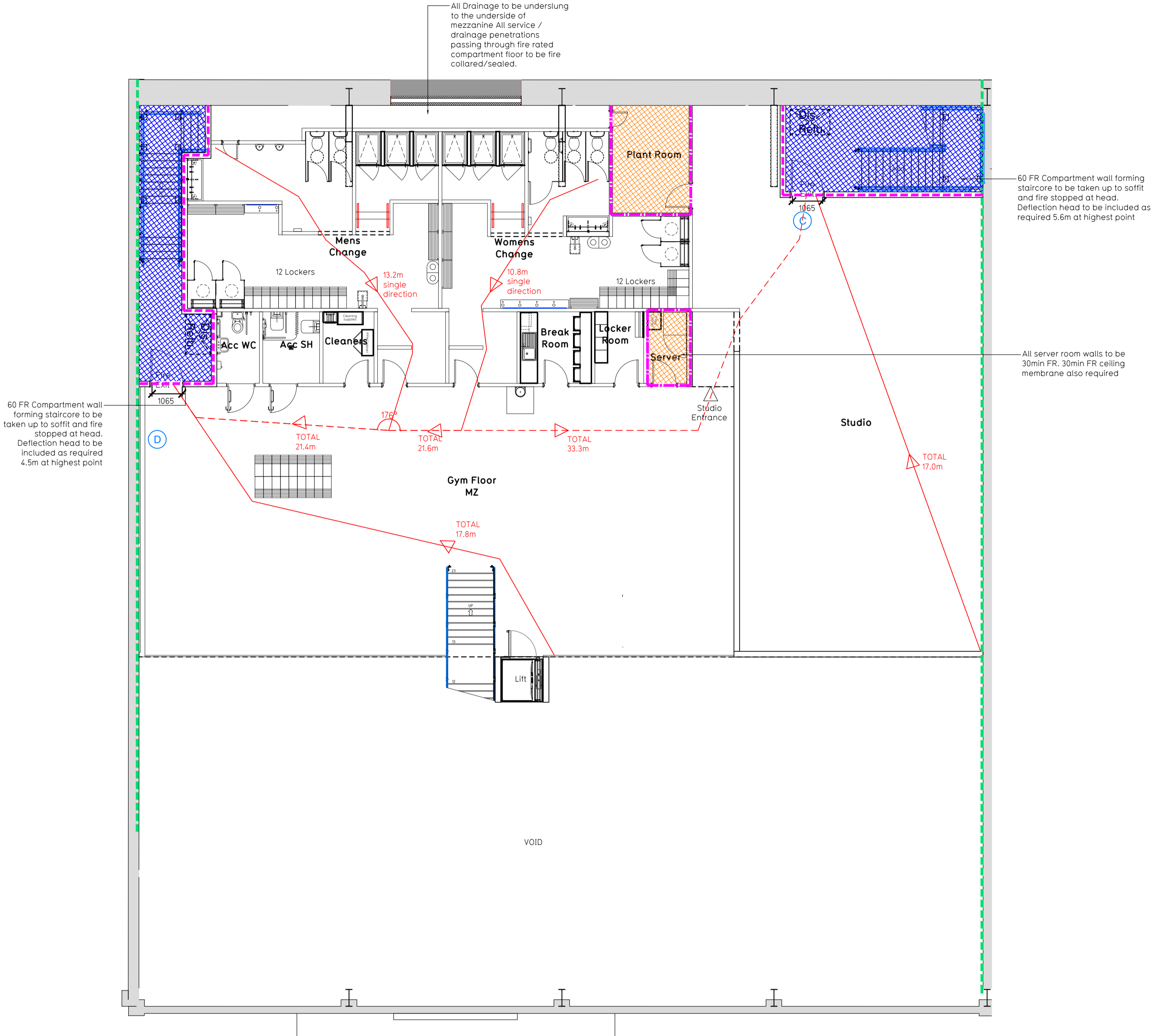


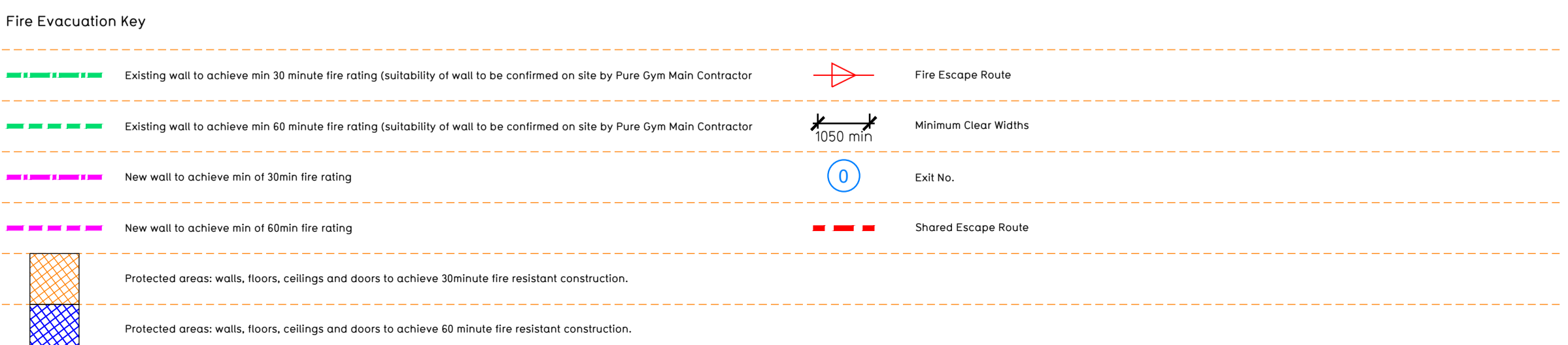
NOTE:
 - Proposals must comply with all acoustic, fire & building regulation requirements
 - No dimensions are to be scaled from this drawing. The contractor is responsible for checking all dimensions on site



Proposed Ground Floor Plan



Proposed Mezzanine Floor Plan



Escape Route Widths:
 In line with Sections 3.21 & 3.22 of 'Approved Document Part B, Volume 2 - buildings other than dwellings' - the adjacent calculations provide justification for the clear opening widths for escape from each floor level/ room in accordance with Table 4 & Appendix C.

Ground Floor
 Storey Exit A Clear Opening Width = 1050mm (allows 222 persons to escape)
 Final Exit B Clear Opening Width = 1050mm (allows 220 persons to escape, largest opening to be discounted)
 Total Aggregate Width for Floor (Less Largest Opening Width of 1050mm from EXIT A) = 1050mm

Mezzanine Floor
 Storey Exit C Limited By Final Exit 3 Clear Opening Width = 1050mm (allows 220 persons to escape)
 Storey Exit D Limited By Final Exit 3 Clear Opening Width = 1050mm (allows 220 persons to escape, largest opening to be discounted)
 Total Aggregate Width for Floor (Less Largest Opening Width of 1050mm from EXIT D) = 1050mm

Based on NIA of 1987sqm, the Puregym peak occupancy target = 228 persons
 Calculated using Puregym Fire Safety Occupancy Levels Forecast Tool.

The designed occupancy of the unit as calculated would allow a max. No. of 460 persons, which is larger than the total estimated occupancy target of 228 persons and is therefore thought to meet with the Approved Document Part B. To allow free movement between the floors the occupancy has not been split 50/50%, but rather allows for occupancy based on gym stations and function assuming that a high percentage of the total occupancy could be on a single floor at one time.

Fire Alarm
 Fire Alarm designed and installed to BS 5839. Smoke & heat detection / emergency lighting by specialist. Please refer to M&E engineer's drawings / specifications.

Escape Lighting
 Emergency escape lighted designed and installed in accordance with BS 5266: Part 1. Please refer to M&E Engineer's drawings for final layout and specification.

Fire Stopping
 All perimeter edges of mezzanine to be appropriately fire stopped to create compartment floor and protect mezzanine structure. All services/drainage penetrations passing through fire rated compartment floor to be fire collared/sealed.

Mezzanine
 Mezzanine Design CDP: New mezzanine structure including deck and column connections to be 60min FR using a boarded solution. Ceiling to be clear and flat ready to receive decoration. Service penetrations to be coordinated and suitably fire stopped. Contractor to submit proposals for design to be reviewed by building control and fire service. Escape Signage and emergency lighting is CDP under the M&E specification. Details of contractors proposals to be provided to Building Control Approved Inspector and Fire Officer within the Contractors Proposals Package, Clause 1.4.

Rev	Date	Description	Drawn / Checked
C01	24.05.23	Hub extended to fit new vending machines. Plasterboard lining to flex wall. Changing rooms rearranged to align to new grid requirements. Labelled mezzanine design.	HJ/JM

PROJECT TITLE	DRAWING TITLE
Crewe Grand Junction Retail Park, Crewe, CW1 2RP	Fire Escape Plan Ground & Mezzanine Floor Plans

DRAWING NO.	DATE	SCALE	NO. SHEETS	DRAWING NO.
HI/JUM	24.04.23	1:100 @ A1	2071	003 - FEP

CONSTRUCTION

PUREGYM

Pure Gym Ltd
 Town Centre House
 The Merlion Centre
 Leeds
 LS2 8LY
 e: architecture@puregym.com
 t: 0113 285 8787
 w: www.puregym.com