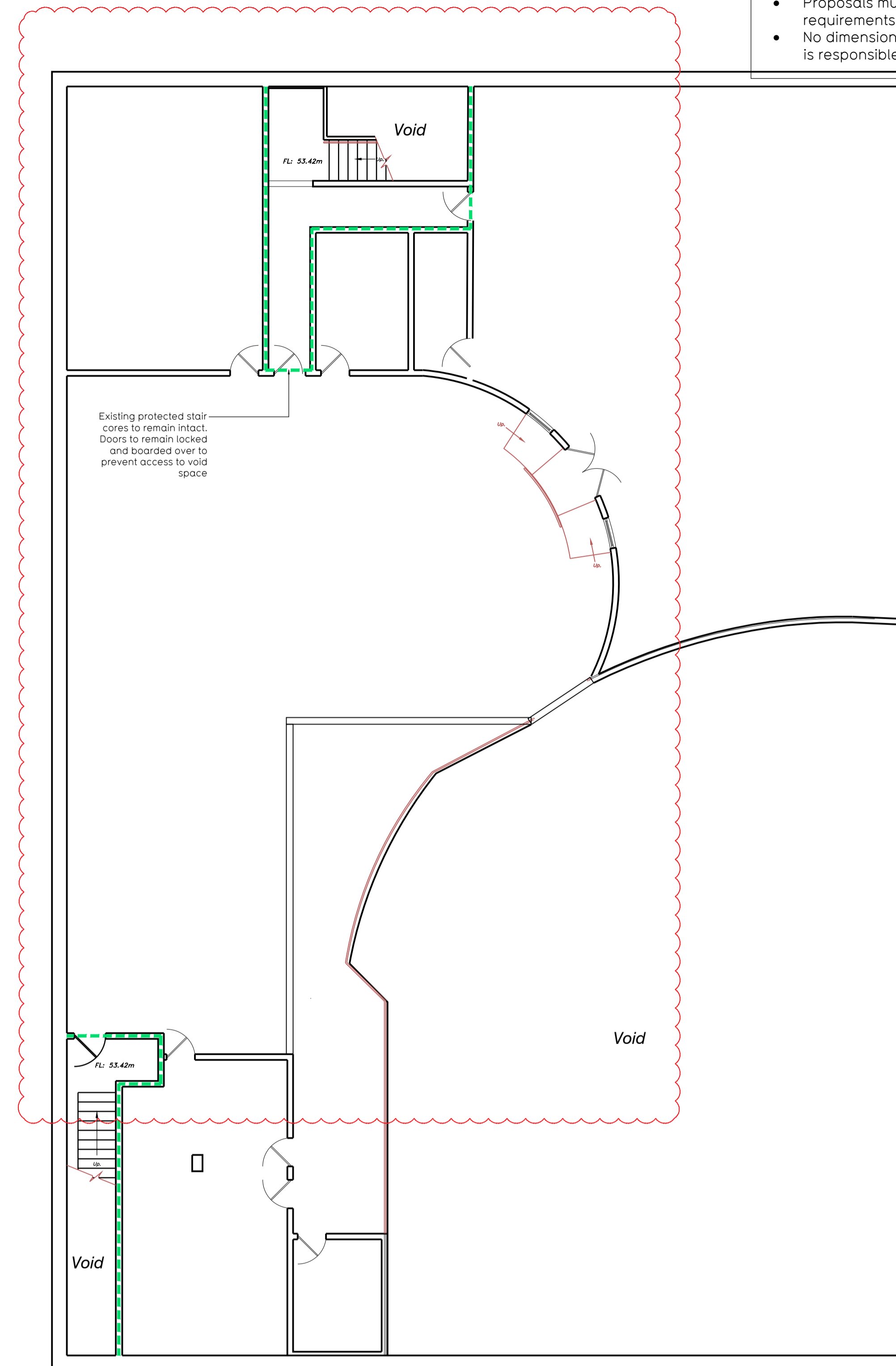
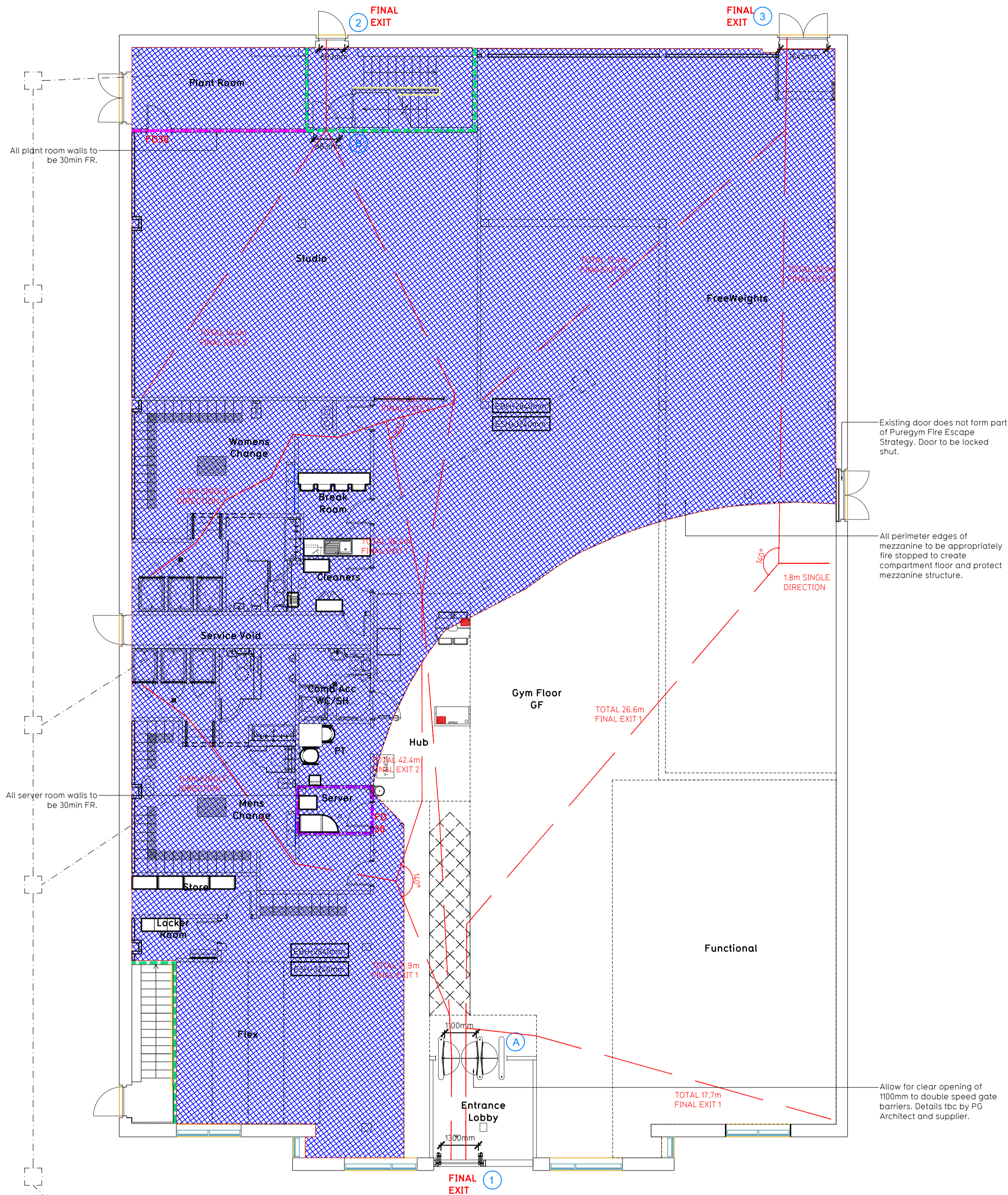


NOTE:

- Proposals must comply with all acoustic, fire & building regulation requirements
- No dimensions are to be scaled from this drawing. The contractor is responsible for checking all dimensions on site



**Fire Evacuation Key**

	Existing wall to achieve min 30 minute fire rating (suitability of wall to be confirmed on site by Pure Gym Main Contractor)		Fire Escape Route
	Existing wall to achieve min 60 minute fire rating (suitability of wall to be confirmed on site by Pure Gym Main Contractor)		Minimum Clear Widths
	New wall to achieve min of 30min fire rating		Exit No.
	New wall to achieve min of 60min fire rating		Shared Escape Route
	Protected areas: walls, floors, ceilings and doors to achieve 30minute fire resistant construction.		
	Protected areas: walls, floors, ceilings and doors to achieve 60 minute fire resistant construction.		

**Escape Route Widths:**  
 In line with Tables 2.3, 2.4, 2.5 & 2.6 of "Technical Booklet E - Fire Safety" for Northern Ireland - the adjacent calculations provide justification for the clear opening widths for escape from each floor level / room.

**Ground Floor**  
 Final Exit 1 limited by Storey Exit A Clear Opening Width = 100mm (allows 220 persons to escape)  
 Final Exit 2 limited by Storey Exit B Clear Opening Width = 83mm (allows 110 persons to escape)  
 Final Exit 3 Clear Opening Width = 1645mm (allows 370 persons to escape, largest opening to be discounted)  
 Total Aggregate Width for Floor (Less Largest Opening Width of 1645mm from FINAL EXIT 3) = 1983mm

**Total**  
 Ground Floor = 330 persons to escape

Based on NIA of 979sqm, the Puregym Peak Occupancy Target = 59 Persons  
 Calculated using Puregym Fire Safety Occupancy Levels Forecast Tool.

The designed occupancy of the unit as calculated would allow a max. No. 330 persons to escape, which is larger than the total estimated occupancy capacity of 169 persons and is therefore thought to meet with the "Technical Booklet E - Fire Safety for Northern Ireland".

**Fire Alarm**  
 Fire Alarm designed and installed to BS 5839. Smoke & heat detection / emergency lighting by specialist. Please refer to M&E engineer's drawings / specifications.

**Escape Lighting**  
 Emergency escape lighted designed and installed in accordance with BS 5266: Part 1. Please refer to M&E Engineer's drawings for final layout and specification.

Escape Signage and emergency lighting is CDP under the MSE specification. Details of contractors proposals to be provided to Building Control Approved Inspector and Fire Officer within the Contractors Proposals Package, Clause 14. Escape signage to comply with BS5449: Parts 1 and 4.

All fire doors to be fitted with intumescent strips, smoke seals and closer's (refer to 019-BIS for further details). All escape doors from rooms of more than 60 people should either not have a lock, latch or bolt fastenings, or be fitted with panic fastenings in accordance with BS EN 125

Rev	Date	Description	Drawn/Checked

<b>Coleraine Riverside Fitness</b>		<b>Fire Evacuation Plan</b>	
3 Riverside Park N, Coleraine BT51 3GE		Ground Floor Plan	
<b>DATE</b>	<b>SCALE</b>	<b>ISS No.</b>	<b>DRAWING No.</b>
28.11.22	1:100 @ A1	2198	003-FEP
<b>DRAWING PURPOSE</b>	<b>Rev</b>	<b>CONSTRUCTION</b>	
		C00	

Pure Gym Ltd  
 Town Centre House  
 The Meriton Centre  
 Leeds  
 LS2 9LY  
 e: architecture@puregym.com  
 t: 0113 285 6787  
 w: www.puregym.com