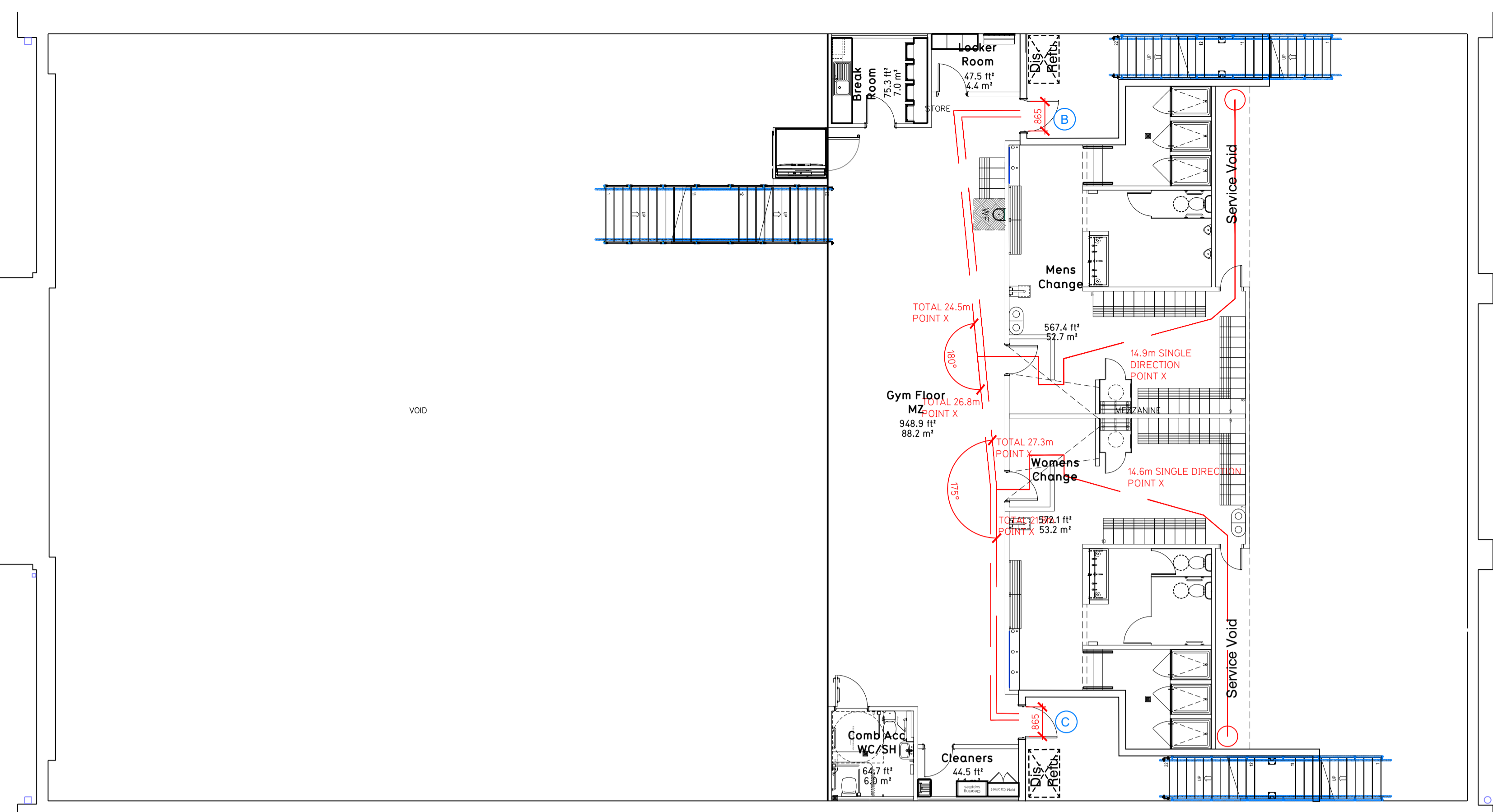


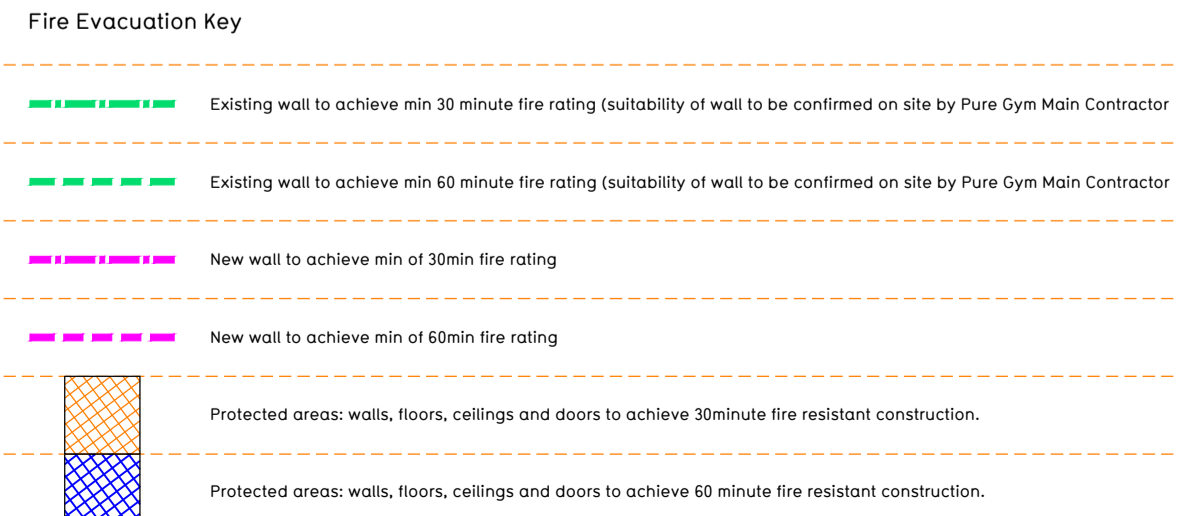
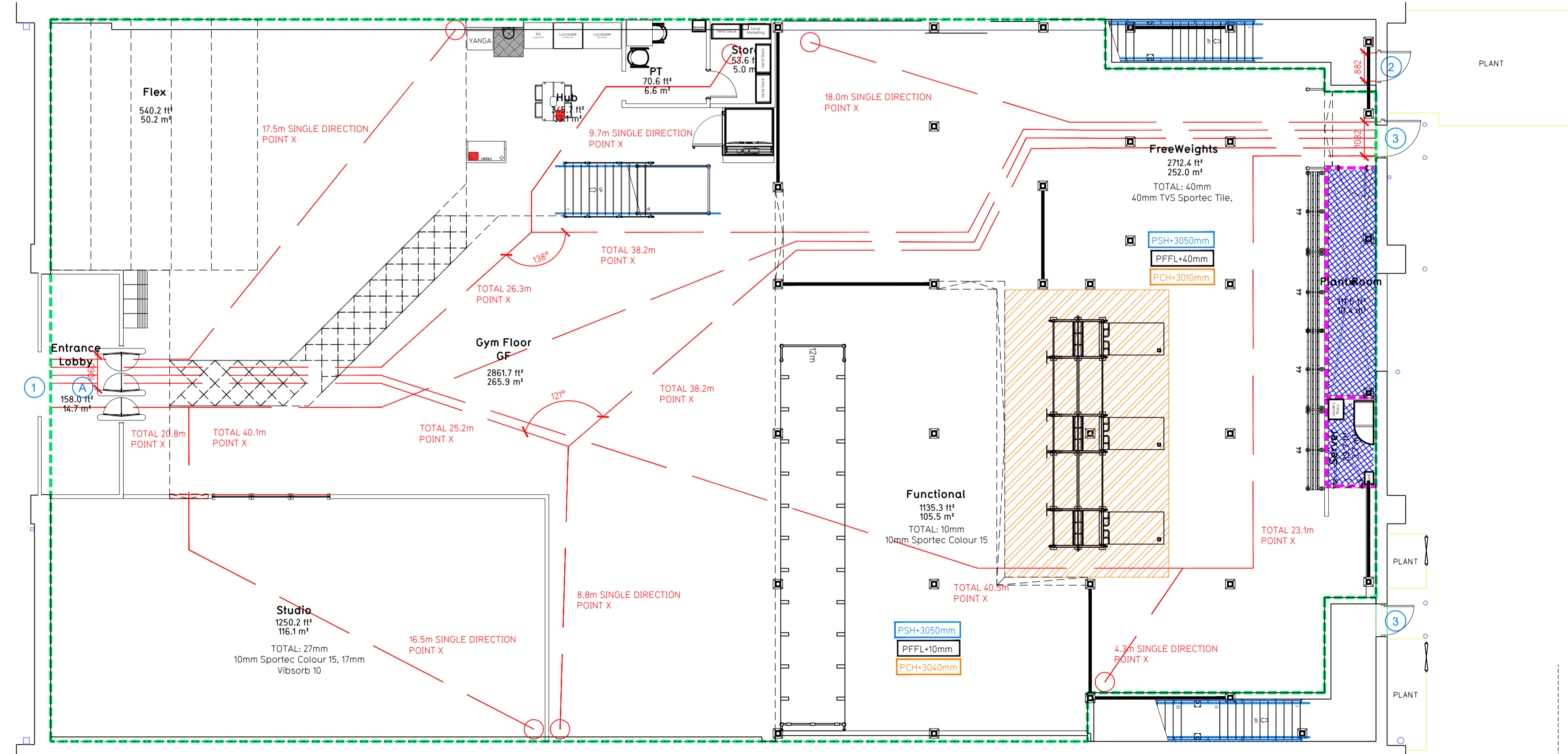
NOTE:

- Proposals must comply with all acoustic, fire & building regulation requirements
- No dimensions are to be scaled from this drawing. The contractor is responsible for checking all dimensions on site

Mezzanine Floor



Ground Floor



**Escape Route Widths:**  
 In line with Sections 3.21 & 3.22 of 'Approved Document Part B, Volume 2 - buildings other than dwelling houses' - the adjacent calculations provide justification for the clear opening widths for escape from each floor level/room in accordance with Table 4 & Appendix C.

**Ground Floor:**  
 Exit 1 is restricted by A. Exit A Clear Opening Width = 1060mm (allows 222 persons to escape)  
 Exit 3 Clear Opening Width = 1082mm (allows 216 persons to escape) largest opening to be discounted  
 Total Aggregate Width for Floor (Less Largest Opening Width of 1082 from A = 1060mm (allows 222 persons to escape))

**Mezzanine Floor:**  
 Exit 2 is restricted by B. Exit B Clear Opening Width = 855mm (allows 110 persons to escape)  
 Exit 4 is restricted by C. Exit C Clear Opening Width = 855mm (allows 110 persons to escape)

**Total:**  
 Ground Floor = 222  
 Mezzanine Floor = 220  
 Total = 442 persons to escape

Based on a NIA of 19376 sqft, the Puregym Peak Occupancy Target = 277 Persons  
 Calculated using Puregym Fire Safety Occupancy Levels Forecast Tool.  
 The designed occupancy of the unit as calculated below would allow a max. No. of 442 persons to escape, which is larger than the total estimated occupancy capacity of 277 Persons and is therefore thought to meet with the Approved Document Part B.

**Sprinklers:**  
 System design and installed in compliance with BS EN 12845:2015 & LPC Technical Bulletins

**Fire Alarm:**  
 Fire Alarm designed and installed to BS 5839. Smoke & heat detection / emergency lighting by specialist. Please refer to MSE engineer's drawings / specifications.

**Escape Lighting:**  
 Emergency escape lighting designed and installed in accordance with BS 5266: Part 1. Please refer to MSE Engineer's drawings for final layout and specification.

**Smoke Extract:**  
 Smoke Extract System to be designed and installed in accordance with BS 7346: Part 8. Please refer to MSE Engineer's drawings for final layout and specification.

Escape Signage and emergency lighting is CDP under the MSE specification. Details of contractors proposals to be provided to Building Control Approved Inspector and Fire Officer within the Contractors Proposals Package, Clause 14.

T00	15/02/23	Issued for Tender	OT/WLT
Rev	Date	Description	Drawn/Checked
<b>PROJECT TITLE</b>		<b>DRAWING TITLE</b>	
Unit 5, Cannock Orbital RP		Fire Evacuation Plan	
Cannock, Orbital - WS11 8XF		Ground and First Floor Plans	
<b>DRAWN/ CHECKED</b>	<b>DATE</b>	<b>SCALE</b>	<b>DRAWING No.</b>
OT/CS	01.02.23	1:100 @ A1	2202
<b>DRAWING PURPOSE</b>			<b>Rev</b>
TENDER			T00

Pure Gym Ltd  
 Town Centre House  
 The Merrion Centre  
 Leeds  
 LS2 8LY  
 e: architecture@puregym.com  
 t: 0113 285 8787  
 w: www.puregym.com