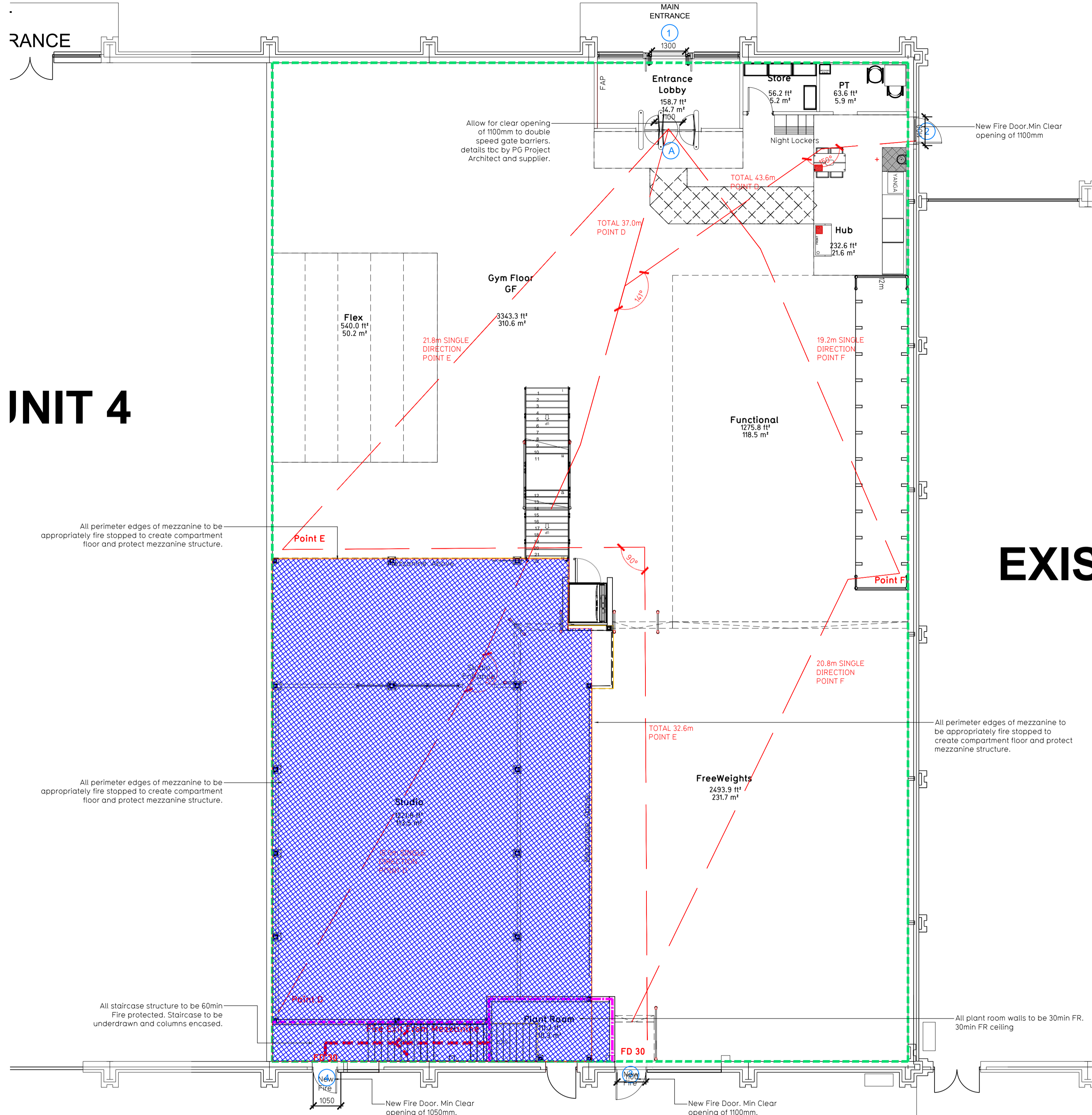


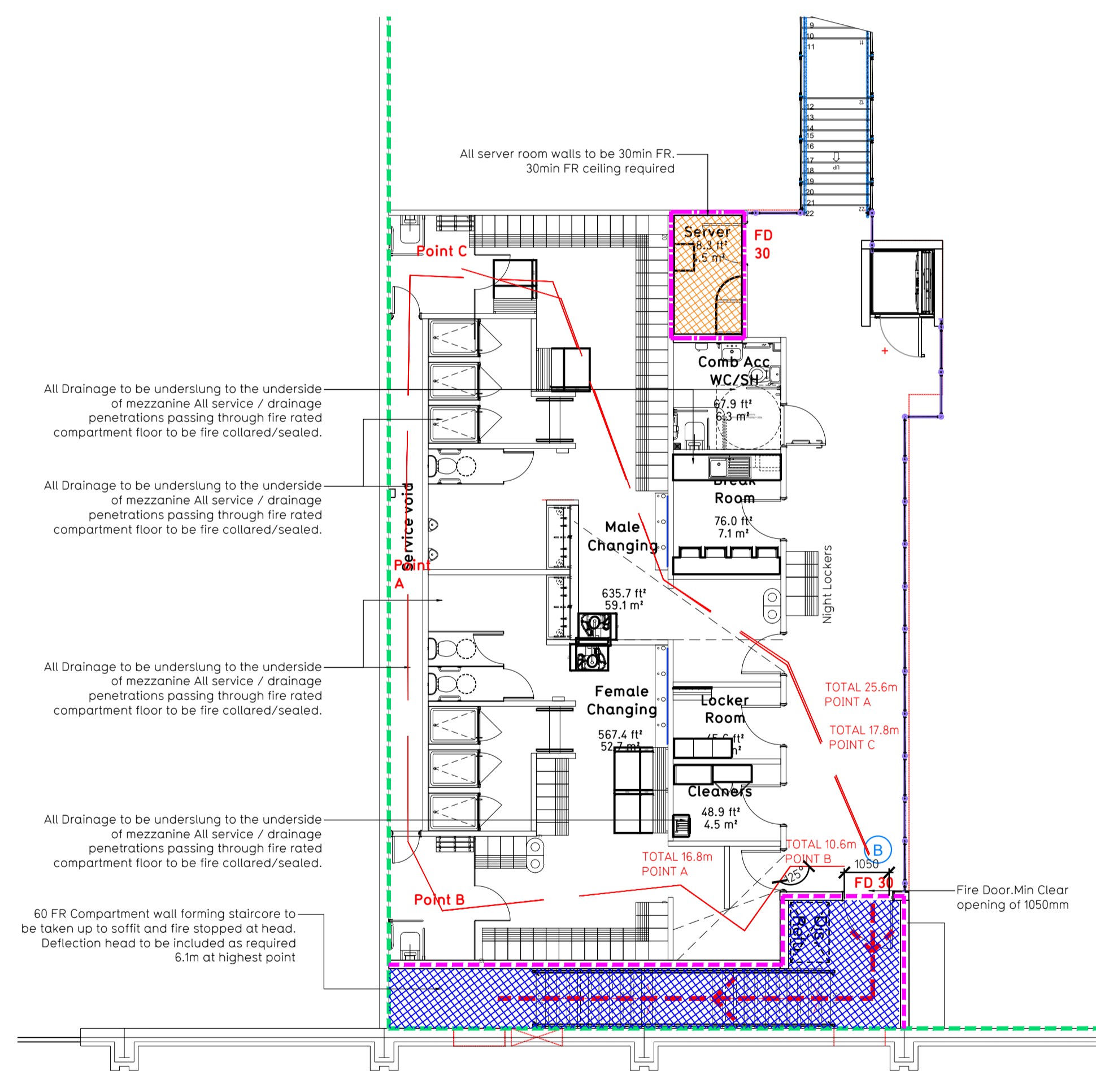
- NOTE:
- Proposals must comply with all acoustic, fire & building regulation requirements
 - No dimensions are to be scaled from this drawing. The contractor is responsible for checking all dimensions on site



INIT 4

EXIS

Fire details to check



Fire Evacuation Key

	Existing wall to achieve min 30 minute fire rating (suitability of wall to be confirmed on site by Pure Gym Main Contractor)		Fire Escape Route
	Existing wall to achieve min 60 minute fire rating (suitability of wall to be confirmed on site by Pure Gym Main Contractor)		Minimum Clear Widths
	New wall to achieve min of 30min fire rating		Exit No.
	New wall to achieve min of 60min fire rating		Shared Escape Route
	Protected areas: walls, floors, ceilings and doors to achieve 30minute fire resistant construction.		
	Protected areas: walls, floors, ceilings and doors to achieve 60 minute fire resistant construction.		

Escape Route Widths:
 In line with Tables 2.3, 2.4, 2.5 & 2.6 of 'Technical Booklet E - Fire Safety' for Northern Ireland - the adjacent calculations provide justification for the clear opening widths for escape from each floor level/room.

Ground Floor:
 Final Exit 1 Clear Opening Width = 1000mm (allows 220 persons to escape)
 Final Exit 2 Clear Opening Width = 1000mm (allows 220 persons to escape)
 Final Exit 3 Clear Opening Width = 1000mm (allows 220 persons to escape - largest opening to be discounted)
 Total Aggregate Width for Floor (Less Largest Opening Width of 1300mm from FINAL EXIT A) = 2200mm

Mezzanine Floor:
 Final Exit A: Fed by Storey Exit B. Clear Opening Width = 1050mm (allows 110 persons to escape, however capacity of mezzanine is limited to 60 persons due to single protected escape)

Total:
 Ground Floor = 440 persons to escape
 Mezzanine Floor = 60 persons to escape
 Total = 500 persons to escape

Based on a NIA of 1192sqft, the Puregym peak Occupancy Target = 275 Persons
 Calculated using Puregym Fire Safety Occupancy Levels Forecast Tool.

The designed occupancy of the unit as calculated would allow a max. No. of 550 persons to escape, which is larger than the total estimated occupancy capacity of 275 persons and is therefore thought to meet with the Technical Booklet E - Fire Safety for Northern Ireland. To allow free movement between the floors the occupancy has not been split 50/50% but rather allows for occupancy based on gym stations and functions assuming that a high percentage of the total occupancy could be on a single floor at one time.

Fire Alarm
 Fire alarm designed and installed to BS 5839: Part 1:2017. Smoke & heat detection / emergency lighting by specialist. Please refer to M&E engineer's drawings / specifications.

Escape Lighting
 Emergency escape lighting designed and installed in accordance with BS 5266: Part 1:2016. Please refer to M&E Engineer's drawings for final layout and specifications.

Mezzanine Design COP: New mezzanine structure including deck and column connections to be 60min FR using a boarded solution. Ceiling to be clear and flat ready to receive decoration. Service penetrations to be coordinated and suitably fire stopped. Contractor to submit proposals for design to be reviewed by building control and fire service. Escape Signage and emergency lighting is COP under the M&E specification. Details of contractors proposals to be provided to Building Control Approved Inspector and Fire Officer within the Contractors Proposal Package. Clause 1.4

Rev	Date	Description	DRAWING TITLE		Drawn/Checked
Ballymena NI (MBF)					
Unit 5, Braidwater RP, Ballymena, BT42 3AG Fire Evacuation Plan					
Ground and First Floor Plans					
DATE	SCALE	NO.	REV.	DRAWING NO.	
MJ/CS	20.09.22	1:100 @ A1	2128	003-FEP	
CONSTRUCTION					Rev
					C01

Pure Gym Ltd
 Town Centre House
 The Merrion Centre
 Leeds
 LS2 9LY
 e: architecture@puregym.com
 t: 0113 285 8787
 w: www.puregym.com