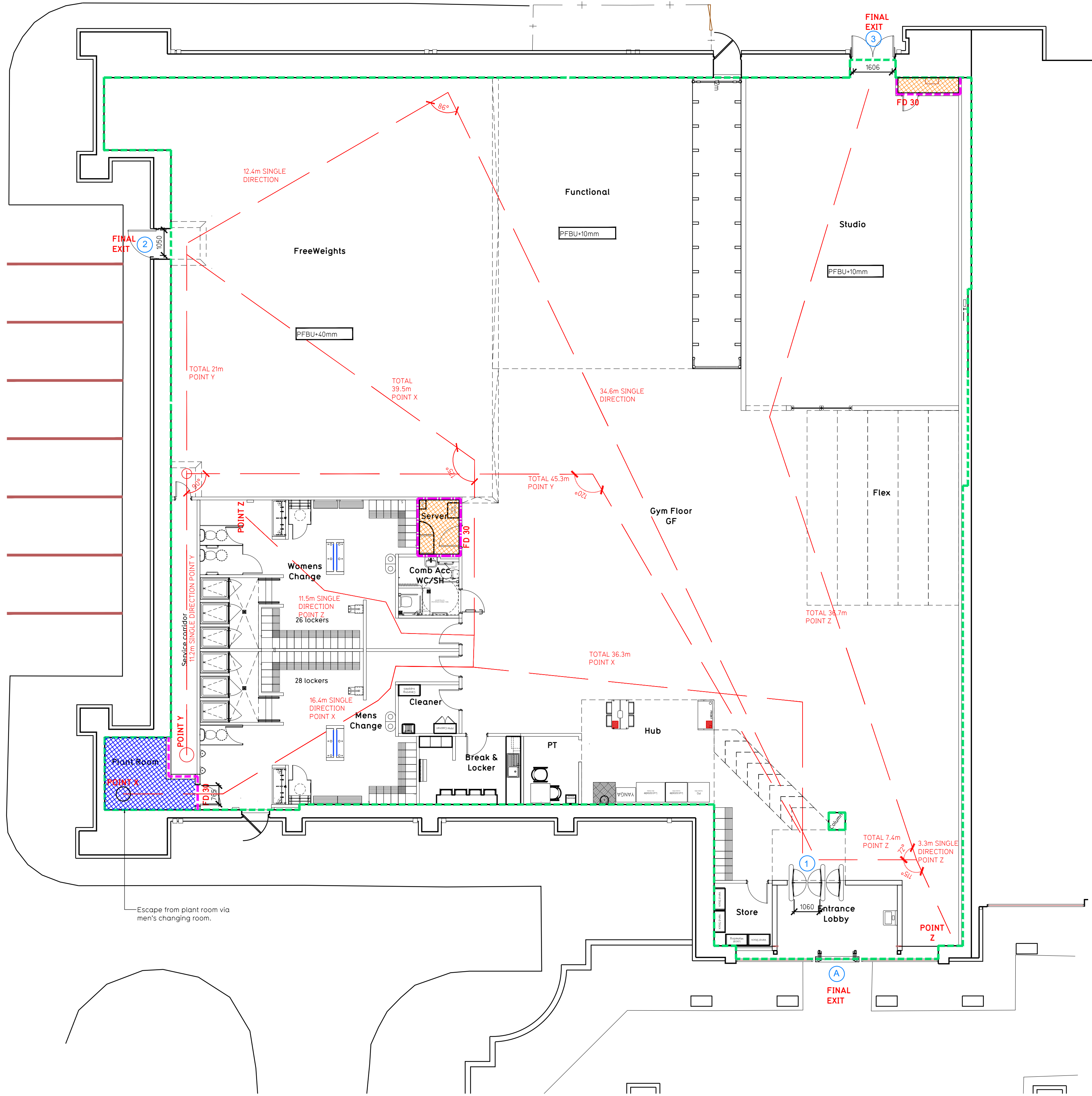
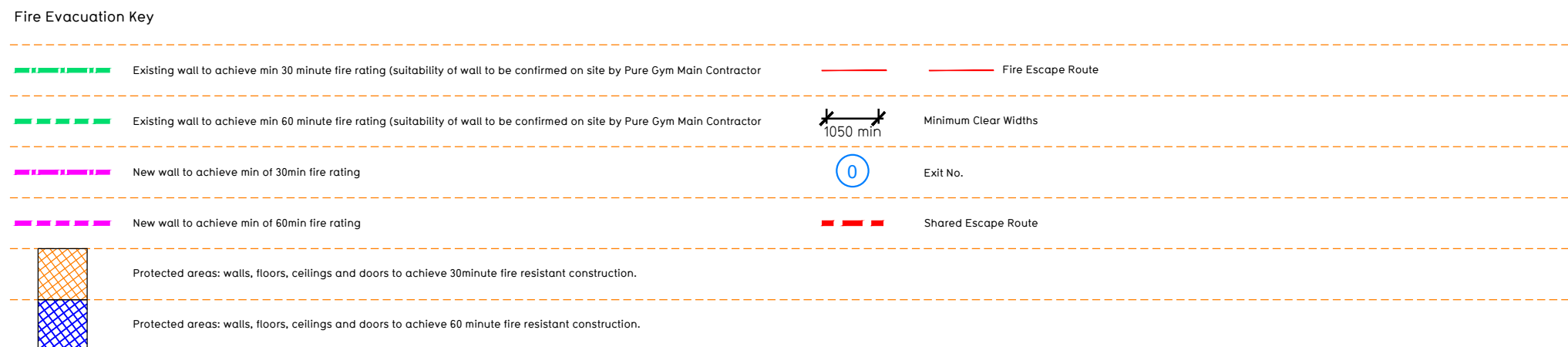


- NOTE:
- Proposals must comply with all acoustic, fire & building regulation requirements
 - No dimensions are to be scaled from this drawing. The contractor is responsible for checking all dimensions on site



Proposed Ground Floor Plan



263 - Lincoln

Escape Route Widths:
In line with Sections 3.11 & 3.22 of Approved Document Part B, Volume 2 - buildings other than dwellinghouses - the adjacent calculations provide justification for the clear opening widths for escape from each floor level/room in accordance with Table 4.4, Appendix C.

Ground Floor
Final Exit 2 Clear Opening Width = 1060mm (allows 222 persons to escape)
Final Exit 3 Clear Opening Width = 1060mm (allows 222 persons to escape)
Final Exit 3 Clear Opening Width = 1600mm (allows 331 persons to escape) (largest opening to be discounted)

Total Aggregate Width for Floor (Less Largest Opening Width of 1060mm from FINAL EXIT 3) = 2700mm. This allows 442 persons to escape from ground floor level.

Total
Ground Floor = 442 persons to escape
Total = 442 persons to escape

Based on a MA of 1.2420m, the Puregym peak Occupancy Target = 185 Persons
Calculated using Puregym Fire Safety Occupancy Levels Forecast Tool.

The designed occupancy of the unit as calculated would allow a max. No. of 442 persons to escape, which is larger than the total estimated occupancy capacity of 185 persons and is therefore thought to meet with the Approved Document Part B. To allow free movement between the floors the occupancy has not been split 50/50% but rather allowed for occupancy based on gym stations and functions assuming that a high percentage of the total occupancy could be on a single floor at one time.

Fire Alarm
Fire Alarm designed and installed to BS 5839. Smoke & heat detection / emergency lighting by specialist. Please refer to MSE engineer's drawings / specifications.

Escape Lighting
Emergency escape lighting designed and installed in accordance with BS 5266: Part 1. Please refer to MSE Engineer's drawings for final layout and specification.
Escape signage and emergency lighting is COP under the MSE specification. Details of contractors proposals to be provided to Building Control Approved Inspector and Fire Officer within the Contractors Proposals Package, Clause 1.4

Rev	Date	Description	Rev	Date	Description	Rev	Date	Description	Rev	Date	Description
PROJECT TITLE			DRAWING TITLE			Rev			Checked		
Lincoln, Carlton Unit 11, The Carlton Centre, LN2 4FJ			Fire Evacuation Plan Ground Floor Plans								
DRAWING NO			SCALE			REV			DRAWING No		
MJJ/HB			31/08/22			1:100 @ A1			003-FEP		
DRAWING PURPOSE			CONSTRUCTION			Rev			C00		
PUREGYM			PUREGYM			PUREGYM			PUREGYM		
Pure Gym Ltd Town Centre House The Meriton Centre Leeds LS2 8LY			e: architecture@puregym.com t: 0113 285 8787 w: www.puregym.com								