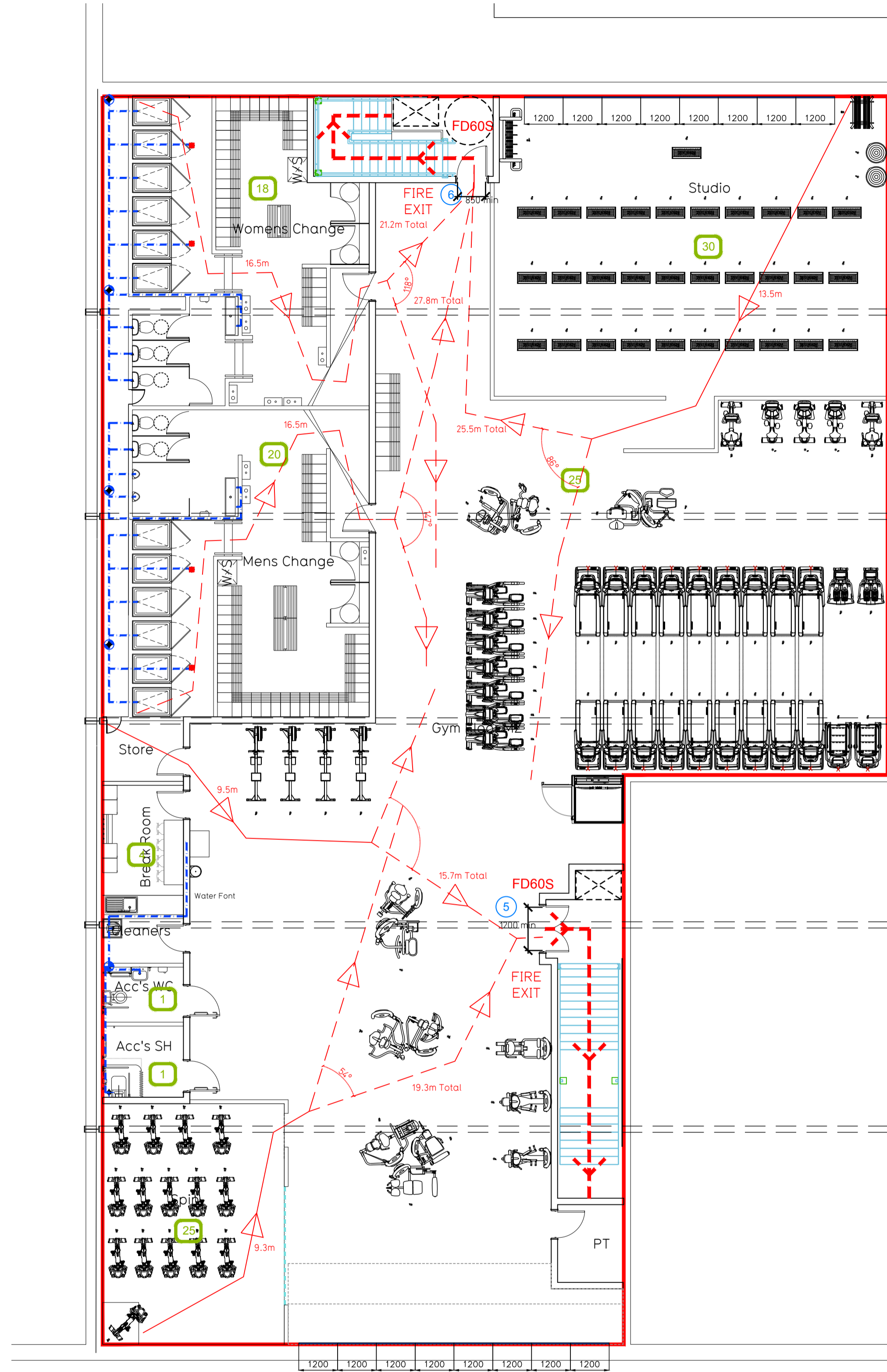


Proposed Ground Floor



Proposed Mezzanine Floor

**Fire Evacuation Key**

	Existing wall to achieve min 60 minute fire rating (suitability of wall to be confirmed on site by Pure Gym Main Contractor)		Occupancy level within area
	New wall to achieve min of 60min fire rating		Fire Escape Route
	Protected areas: walls, floors, ceilings and doors to achieve 30minute fire resistant construction.		Minimum Clear Widths
	Protected areas: walls, floors, ceilings and doors to achieve 60 minute fire resistant construction.		Exit No.
			Protected Escape Route

**Escape Route Widths**

In line with Sections 3.21 & 3.22 of 'Approved Document Part B, Volume 2 - buildings other than dwellings' - the adjacent calculations provide justification for the clear opening widths for escape from each floor level/ room in accordance with Table 4 & Appendix C.

**Fire Alarm**

Fire Alarm designed and installed to BS 5839. Smoke & heat detection / emergency lighting by specialist. Please refer to M&E engineer's drawings / specifications.

**Escape Lighting**

Emergency escape lighting designed and installed in accordance with BS 5266-Part 1. Please refer to M&E Engineer's drawings for final layout and specification.

**First Floor**

Exit 5 Clear Opening Width = 1200mm (allows 220 persons to escape)  
Exit 6 Clear Opening Width = 850mm (allows 110 persons to escape)  
Exit 5 Largest opening and discounted.

Total Aggregate Width for Floor (Less Largest Opening Width of 1200mm from Exit 5) = 850mm

First Floor Total Estimated Occupancy Capacity = 110 Persons

Exit 6 provides a min. width of 850mm and would allow a max. No. of 110 persons to escape, which is sufficient for the total estimated occupancy capacity of 110 Persons and is therefore thought to meet with the Approved Document Part B.

**Ground Floor**

Exit 2 Clear Opening Width = 1200mm (allows 220 persons to escape)  
Exit 3 Clear Opening Width = 1800mm (allows 220 persons to escape)  
Exit 3 Largest opening and discounted.

Total Aggregate Width for Floor (Less Largest Opening Width of 1800mm from Exit 3) = 1200mm

Ground Floor Total Estimated Occupancy Capacity = 110 Persons

Exit 2 provides a min. width of 1200mm and would allow a max. No. of 110 persons to escape, which is sufficient for the total estimated occupancy capacity of 110 Persons and is therefore thought to meet with the Approved Document Part B.

**Final Exit**

Exit 1 having a clear width of at least 1500mm and have a combined escape capacity of 220 people.

Exit 3 having a clear width of at least 1800mm and have a combined escape capacity of 220 people.

Exit 4 serves only the first floor and having a clear width of at least 950mm and escape capacity of 110 people.

Rev	Date	Description	Drawn/Checked
<p><b>Beacon Retail Park</b> Bletchley</p> <p><b>Fire Escape Plan</b> Ground and Mezzanine Floor</p>			
DRAWN	CHECKED	DATE	SCALE
EK/PG		07.01.19	1:100@A1 / 1:200@A3
DRAWING NO	JOB NO	DRAWING NO	Rev
1A-LBF-20	003-FEP		
<b>CONSTRUCTION</b>			
			Pure Gym Ltd Town Centre House The Meriton Centre Leeds LS2 8LY e: architecture@puregym.com t: 0113 285 8787 w: www.puregym.com